

## Facility

### Nozue Orthopedics, Dentistry and Internal Medicine Medical clinic for supporting community living Orthopedic・Dentistry

5-1-3 Oda, Kawasaki Ward,  
Kawasaki City  
TEL.044-355-1561  
FAX.044-355-1574

### Nozue Orthopedics, Dentistry and Internal Medicine Dentistry・Home-based dental care

5-1-3 Oda, Kawasaki Ward,  
Kawasaki City  
TEL.044-355-8762  
FAX.044-276-8734

### Nurcing Care Support Center

2-17-8 3F Asada, Kawasaki Ward,  
Kawasaki City  
Tel: 044-366-6200  
Fax: 044-329-0154

### Oda home visiting nursing station

3-32-1 1F Kyomachi Bldg.,Kyomachi,  
Kawasaki Ward, Kawasaki City  
TEL.044-366-8763  
FAX.044-366-8764

### Nozue Orthopedics, Dentistry and Internal Medicine Outpatient rehabilitation

5-1-3 Oda, Kawasaki Ward,  
Kawasaki City  
TEL.044-366-1581  
FAX.044-329-1888

### Nozue Orthopedics, Dentistry and Internal Medicine Home-based rehabilitation

5-1-3 Oda, Kawasaki Ward,  
Kawasaki City  
TEL.044-355-1561  
FAX.044-355-1574

### Nozue day service center

3-32-1 1F Kyomachi Bldg.,Kyomachi,  
Kawasaki Ward, Kawasaki City  
TEL.044-333-8773  
FAX.044-333-8764

### **KM** Life up Oda Ginza day service

4-31-8 1F Puchiboa Oda,  
Kawasaki Ward, Kawasaki City  
TEL.044-201-9111  
FAX.044-201-9139

### Keiwakai Health Club

5-2-13 1F Oda, Kawasaki Ward,  
Kawasaki City  
TEL.044-322-7373  
FAX.044-201-7314

### **KM** Health Club Parale Kawasaki

2F Parel Red Building Lot No. 8  
Higashidacho, Kawasaki Ward,  
Kawasaki City  
TEL.044-280-6600  
FAX.044-280-6601

### Day service Oda Hondori

2-18-13 Oda, Kawasaki Ward,  
Kawasaki City  
TEL.044-329-1541  
FAX.044-329-1542

### Day service Higashi Oda

5-19-7 Oda, Kawasaki Ward,  
Kawasaki City  
TEL.044-366-7221  
FAX.044-366-7222

### Day service Ogura

3-9-20 2F Care Village Ogura,  
Ogura, Saiwai Ward, Kawasaki City  
TEL.044-589-8101  
FAX.044-589-8762

### **KM** Day service Hinokinoie-Keiwa

2-10-11 1F Watarida,  
Kawasaki Ward, Kawasaki City  
TEL.044-201-6301  
FAX.044-201-6308

### Group home Watarida

2-7-1 Watarida, Kawasaki Ward,  
Kawasaki City  
TEL.044-355-4712  
FAX.044-355-4712

### Group home Oda

4-11-9 Oda, Kawasaki Ward,  
Kawasaki City  
TEL.044-201-7461  
FAX.044-201-7462

### Group home Kyomachi

3-32-1 Kyomachi, Kawasaki  
Ward, Kawasaki City  
TEL.044-201-6621  
FAX.044-201-6622

### Group home Higashi Oda

5-19-14 2F・3F Care Village  
Higashi Oda, Oda, Kawasaki  
Ward, Kawasaki City  
TEL.044-355-3122  
FAX.044-355-3132

### Group home Yotsuyakamicho

8-7 Yotsuyakamicho, Kawasaki  
Ward, Kawasaki City  
TEL.044-277-2221  
FAX.044-277-2231

### Group home Ogura

3-9-20 3F Care Village Ogura,  
Ogura, Saiwai Ward, Kawasaki City  
TEL.044-589-8878  
FAX.044-589-8762

### **KM** Group home Keiwa

2-7-13 Watarida, Kawasaki  
Ward, Kawasaki City  
TEL.044-355-4711  
FAX.044-201-4011

### Small-scale multi-functional home Kyomachi

2-17-8 Asada, Kawasaki Ward,  
Kawasaki City  
TEL.044-280-6200  
FAX.044-280-6201

### Small-scale multi-functional home Higashi Oda

5-19-14 1F Care Village Higashi  
Oda, Oda, Kawasaki Ward,  
Kawasaki City  
TEL.044-355-3121  
FAX.044-355-3132

### Small-scale multi-functional home Ogura

3-9-20 1F Care Village Ogura,  
Ogura, Saiwai Ward, Kawasaki City  
TEL.044-589-8738  
FAX.044-589-8739

### Assisted living Medical Care Maison Oda Hondori

2-18-13 Oda, Kawasaki Ward,  
Kawasaki City  
TEL044-329-1541  
FAX.044-329-1542

### Keiwakai Nozue Care

2-18-13 Oda, Kawasaki Ward,  
Kawasaki City  
TEL.044-366-0383  
FAX.044-329-0154

### Care center Oda Hondori

2-18-19 Oda, Kawasaki Ward,  
Kawasaki City  
TEL.044-329-0150  
FAX.044-329-1542

### Oshima Nakajima Comprehensive community support center

2-3-2-101  
Nakajima, Kawasaki Ward,  
Kawasaki City  
TEL.044-276-9901  
FAX.044-276-9902

### Saiwai Higashi Comprehensive community support center

4-1-9 Tode, Kawasaki Ward,  
Kawasaki City  
TEL.044-555-1411  
FAX.044-555-1412

### Sukusuku nursery room

3-8-11 Oda, Kawasaki Ward,  
Kawasaki City  
TEL.044-201-1705  
FAX.044-201-1735

### **KM** Keiwa Kai Medical College

5-1-3 Oda, Kawasaki Ward,  
Kawasaki City  
TEL.044-366-6200  
FAX.044-329-0154

### **KM** Keiwa Kai Medical Care Center

3-19-11 2F Oda, Kawasaki Ward,  
Kawasaki City  
TEL.044-333-2017  
FAX.044-366-8764

### **KM** Home-based massage Keiwa

5-2-13 1F Oda, Kawasaki Ward,  
Kawasaki City  
TEL.070-5553-8787  
FAX.044-329-0154

**KM** Keiwakai Medical Corporation

## Cherishing Encounter and the Future

Medical and Nursing care © Keiwakai group



<http://keiwa-kai.or.jp/>

# KEIWAKAI MEDICAL AND CARE

## General information

Medical Corporation  
**KEIWAKAI GROUP**  
SINCE 1983



**Shigeko Kamiyama**  
Chairwoman of the Board

**Human resource is the cornerstone of our corporation.**

At present, Keiwa Kai Group has around 500 employees that support the corporation’s operations. I feel delighted mostly when I hear remarks such as “patients and staff are lively,” from the guests who visit our facilities. Keiwa Kai does not just seek for employees in terms of skill and career background. While we recognize that these are essential, we put more importance on seeking employees who can provide compassionate care and service to our patients. Keiwa Kai shall be a place where fellows who value the spirit of altruism render care services to our patients.



**Yasuko Nozue**  
Non-director of the Board

**We give importance to community interaction.**

In the year 58 of the Showa period, we put into operation the orthopedic clinic in Oda, Kawasaki Ward, Kawasaki City and this period also marked the beginning of Keiwa Kai Medical Corporation. Thereafter, we have received support from everyone in the community for the span of 30 years. “It’s good that there is Keiwa Kai” – such impression from everyone is what we believe we want to continue in the future. We give importance not only to the medical and nursing care services that we render, but also to the heartfelt interaction we create with everyone in the community.



**Toshimi Kamiyama**  
Director of the Board  
Dentistry Hospital Director  
Nozue Orthopedics, Dentistry  
and Internal Medicine

**We aim for comprehensive coordination of medical and nursing care.**

At present, the rapid increase of elderly people with dementia in the society has become a serious problem needing immediate action. Persons with dementia bring a big impact to their families, and those living on their own necessitate care coming from the community. From the provision of various nursing services to people with mild cases to the giving of appropriate care to people with severe cases, Keiwa Kai aims to create a community where the provision of seamless care services can be realized.



**Yutaka Ozawa**  
Director of the Board  
Hospital Director, Nozue Orthopedics,  
Dentistry and Internal Medicine

**We aim to provide home healthcare that is rooted in the community.**

As the director of Internal Medicine Department, I had been engaged in community health care since April 2007. For the past 30 years in Kawasaki City, there had been a lot of medical doctors who had engaged in community health care. I myself also learned from fellow senior physicians, so I am always thinking of being able to contribute to community health care no matter how little. After the war, because of the dramatic change in dietary practices, presently, there has been an increase in lifestyle-related diseases such as high blood pressure, diabetes and hyperlipidemia, as well as digestive disorders such as cancer. Based on past experiences, while doing medical services where technical expertise are being leveraged, we wish to be beneficial to everyone as a compassionate family doctor that is rooted in the community.



**Tomoko Inagaki**  
Keiwakai Medical Limited Company  
Representative Director

**We continue to be a company that is trusted by the community people.**

The concept of “nursing” that we think of is not just simply providing care to our patients. Above anything else, we give importance on being able to touch the hearts of our patients. Through this heartfelt connection, we are able to provide maximum support in order to assist our patients live a life that is worth living. “If it’s Keiwa Kai, I’m at peace,” “It’s good at Keiwa” – in order for such remarks, as well as being a company that is trusted by everyone in the community to continue, all of us are putting a lot of effort more than ever.





## We provide comprehensive medical and nursing care services to protect the health and welfare of local residents.

### Community health care

The Japanese government actively promotes “community health care coordination” where community clinics are required to have advanced medical services in order to cooperate with local hospitals. Since Keiwakai Medical Corporation established its outpatient rehabilitation center, we have continued working together with various hospitals for many years. As we have supported different medical services such as outpatient day service relating to postoperative rehabilitation, physical therapy service, home care medicine, and others, we have received solid trust from local hospital.

#### 【Main hospital partners】

Kawasaki City Hospital/ Nihon Kokan Hospital/ Kawasaki Rinko General Hospital/ Daiichi Hospital/ Kawasaki Saiwai Hospital/ Ota General Hospital/ Eastern Yokohama City Hospital/ Kanto Rosai Hospital/ Others

### Functional enhancement type Medical clinic for supporting community living

Even for community health care coordination, the variations and quality of home-based medical services provided by community clinics are always required at a high level.

Nozue Orthopedics, Dentistry and Internal Medicine’ s home care medicine visit services are provided on a planned or regular basis for those people who have difficulty visiting a hospital, as well as for those who have alterations in medical condition, dealing with various needs relating to orthopedics, dentistry and internal medicine.

#### 【Main home-based medical care services】

Home-based medical care/ Home-based dental care/ Home health/ Home-based rehabilitation/ Home-based massage/ Others

### Community-based home doctors

Our family doctors provide medical services not only to protect health and treat illnesses. We recognize that coordination with community’ s medical institutions as well as with the persons involved in nursing care also plays an important role. In Nozue Orthopedics, Dentistry and Internal Medicine, though the active use of electronic medical records, medical information is promptly made available; thus, allowing us to determine the best possible services to be rendered to our patients. We, as a family doctor tied closely to the community, continue to protect the health of everyone.



### Orthopedics

#### 【Medical services】

- Anti-inflammatory/ Nerve block injection, trigger point injection, intra-articular injection
- Prosthetic brace (outpatient)/ orthopedic shoes, Hallux Valgus, lumbar corset, ankle joint foot drop orthosis for stroke patients
- Hip/ hip pain, lumbar spondylosis, lumbar spinal stenosis
- Knee/ osteoarthritis of the knee
- Neck · shoulder/ cervical spondylosis, whiplash injury, periarthritis
- Conservative treatment of limb fracture ■ Various sprains
- Various dislocations ■ Home-based medical care
- Outpatient rehabilitation ■ Minor surgery ■ Others

### Internal medicine

#### 【Medical services】

General medicine/ cardiology/ gastroenterology (transnasal endoscope)/ rheumatism · collagen disease/ smoking cessation/ constipation/ traditional Chinese medicine/ consultation on forgetfulness/ diet/ anti-aging/ hypertension/ diabetes/ dyslipidemia/ arrhythmia/ insomnia/ allergic diseases/ erectile dysfunction (outpatient)/ androgenetic alopecia (outpatient)/ terminal care/ palliative care

#### 【Kawasaki City’ s annual physical exam·health guidance implementing clinics】

Annual physical exam procedures: blood chemistry, anthropometrics, urinalysis, electrocardiogram, medical consultation, and others

Kawasaki City cancer screening: pulmonary cancer, stomach cancer, colon cancer, osteoporosis, screening for pneumonia virus

Immunization: Streptococcus pneumonia vaccination for the elderly/ Year 30 of Heisei period Kawasaki City immunization program

### Dentistry · Home-based dental care

#### 【Medical services】

- Treatment of dental caries, prevention of periodontal diseases
- Whitening
- Complete denture (silicon denture)
- Partial denture (smile denture)

### Home-based medical care

#### 【Medical services】

Assessment of medical condition · health management/ measurement of body temperature · heart rate · blood pressure/ injection, prescription of medicine · management/ creation of attending physician’ s opinion letter/ guidance on nursing care/ guidance on the prevention of bedsores

### Home-based nursing visit

#### 【Nursing services】

Nasal or gastric tube feeding for gastrostomy cases/ oral suctioning/ colostomy care/ urethral catheterization/ bladder wash/ indwelling catheter/ terminal care/ blood glucose measurement/ insulin injection/ oral ingestion training/ wound care/ intravenous insertion, and others

### Home-based rehabilitation

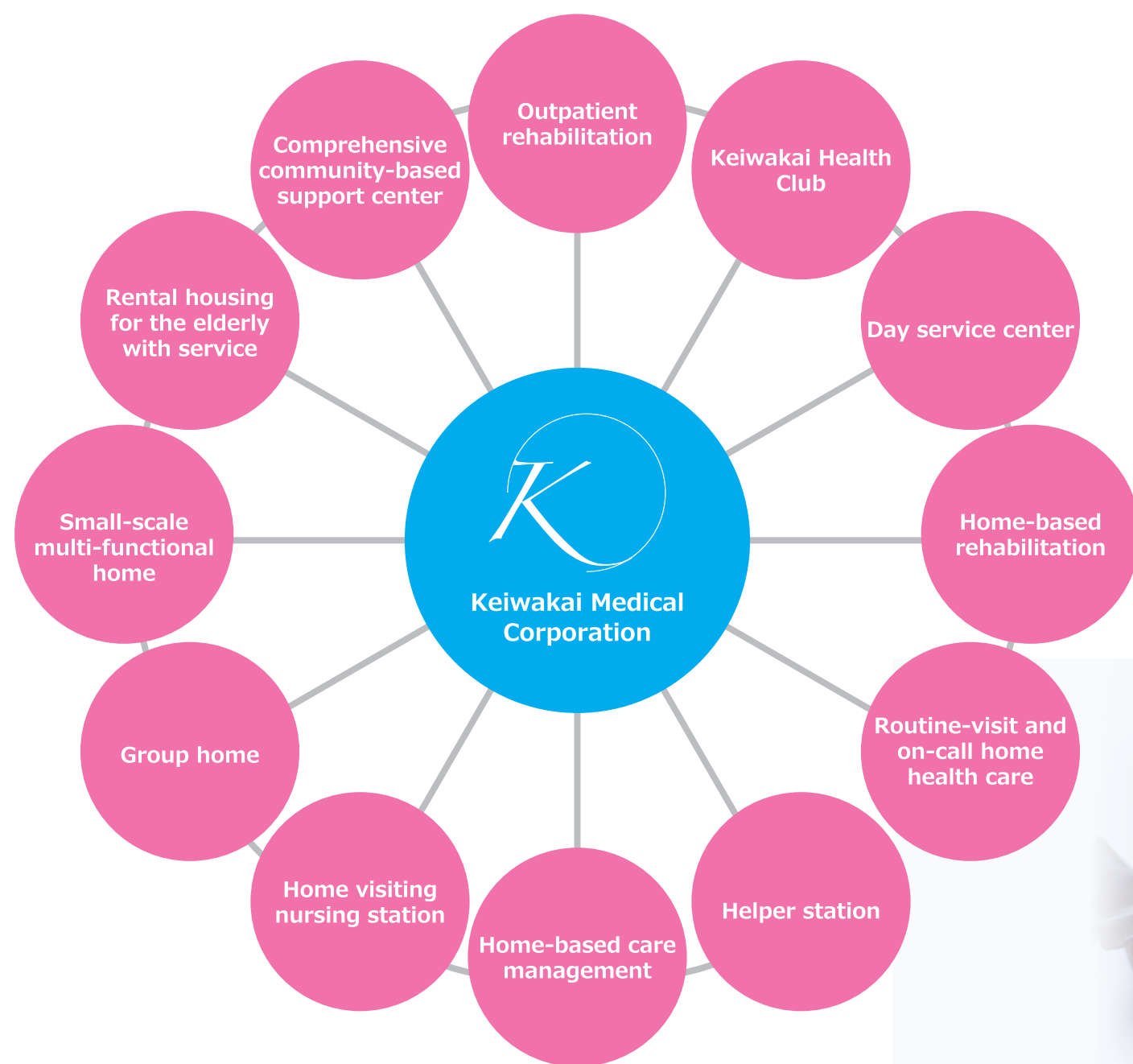
Rehabilitation services provided by physical therapists and occupational therapists

#### 【Rehabilitation services】

Creation of a rehabilitation program, health management, maintenance and/or improvement of activities of daily living



**In order to respond to the concerns of everyone in the community, we are putting in order an appropriate system where medical and nursing care services are coordinated. That is the community-based service that we aim for.**



## Keiwakai Group' s nursing care

The thing that Keiwakai' s nursing care puts importance on is touching the hearts of our patients, taking seriously the individual lives of each person. Nursing care is definitely not just "assisting the elderly persons as well as persons with disabilities." In order for our patients to have a remarkable old age experience, we take seriously each individual, giving priority to services which are specific to each patient, as well as providing services where high satisfaction can be acquired. Furthermore, we endeavor to support our patients toward "self-reliance." When looking at the long term, a caregiver who completely takes the burden of patients with disability makes the latter' s ability to do things by themselves fewer, and such instance does not create an advantage on the part of the patients. We in Keiwakai provide nursing care services that are tailored toward assisting our patients obtain self-reliance, so they can live independently. We believe that the essence of nursing is being able to provide pure support in order for the patients to live with self-reliance in the community that they have been accustomed to

## Medical Corporation Group' s direct management

As we anticipate for the year 2025 dilemma, such period is when medical and nursing care coordination will be even more regarded as important. However, although coordination is actually present, there are limits in terms of coordination with other companies and corporations as well as sharing of information. At the core of Keiwakai Group' s nursing care is the ever existence of Keiwakai Medical Group and Nozue Orthopedics, Dentistry and Internal Medicine. Whether it is individual information, creation of individual program, emergency response, and others, we provide services that are finely coordinated based on mutual complementation within the group. Particularly, the conferences being held at the clinic and outpatient rehabilitation centers are participated by doctors, nurses, physical therapists, occupational therapists, and caregiving staff, allowing mutual confirmation and thorough enforcement of instructions. Because it is managed by the same medical corporation, such a possible service is our strength.

## Response to every nursing care needs

Even when one says "nursing care," the required care and services based on the condition absolutely vary. For instance, the care for a person with relatively mild case should not just be limited to the improvement of functions. There are cases where aiming toward full recovery become possible. Furthermore, in the case of a person that is highly dependent on medical care, in order to provide respite to the person' s family, there are pertinent circumstances where outpatient services become essential. Moreover, there are cases where care plans necessitate revision, and depending on the change in condition, replacement of appropriate services becomes necessary. Keiwakai Group, with strong coordination between medical and nursing care at its background, from rehabilitation-specializing day service up to group home, provide services that are responsive to every nursing care needs.





## Health club

You can sweat heavily. Such nursing care facility exists.

My family recommended that I attend day service, yet I feel that spending time singing and doing recreational activities does not suit me. At health club, I only spend three hours, yet doing machine training, exercises and others can make me perspire intensely. I feel that I am amazed that such facility exists. (From the patient)



## Home-based rehabilitation

My father who used to be bedridden now attends day service.

Thanks to home-based rehabilitation, my father who used to be bedridden was at first, became able to sit, then gradually became able to transfer on a wheelchair, and now attending day service. The attending physical therapist used to bring my father somewhere, little by little he regained physical strength, and in one spring time, while enjoying the cherry blossoms, he was able to practice walking. Even the family who was doing a tour got surprised. (From a family member)



## Home-based medical care

We are were glad we were able to spend time with our grandmother the whole time.

My grandmother who has been unable to go to the hospital is being visited at home by a doctor for a long time. I feel very thankful that we could rely on the doctor who, even on rainy or windy days, attends to our grandmother. Although she passed away the other day, she said, "I am happy I got to spend my time at home until the last days." I am thankful that my grandmother was able to spend happily her last days at home. (From a family member)



## Outpatient rehabilitation

Thanks to rehabilitation that I no longer have to walk with a cane.

After undergoing surgery on artificial knee joint, I was told by the doctor that walking might become difficult, but when I devoted myself to going to rehabilitation center for rehabilitation, now, I am able to walk without carrying a cane. I was even praised by the doctor. I am thankful to the physical therapist's perseverance as well as the careful guidance that I received. I am really very grateful. (From the patient)



## Voice & Smiles



## Day care service for persons requiring a higher level of care

Our family burden decreased upon attendance to day care service.

My grandfather could not hold a sitting position, and suctioning of sputum has become necessary. At the time when we felt that the assistance coming from our family is insufficient, we heard that patients with the same condition as my grandfather can attend day service. At present, he attends at Nozue, and our family burden has sharply decreased. We are really helped. (From a family member)



## Day service

My mother becomes lively after she started attending day service.

My mother used to do nothing at home and spend the day just lying on bed. After she started attending day service, her lifestyle has changed. She now makes remarks such as "Should I help you with the household chores?" and it has become her habit to wash the dishes. My mother has returned to becoming lively. (From a family member)



## Home care

Thanks to the helper's assistance to my husband as well, we are helped.

My husband had been in a state where caregiving assistance became necessary, but since I am also physically weak, I was at loss on what to do. At that time, I consulted with a care manager, and it was decided that in order to decrease the burden on the family, a helper will do home care thrice a week. I am thankful because in one way or another, we are still somehow able to continue our daily living at home. (From the patient)



## Day service

It has been a long time since my grandmother cooked miso soup for us.

Yesterday, after attending day service, my grandmother cooked miso soup for us after a long time. Not only have we tasted the miso soup we have missed from way back, but also we have seen grandmother being lively. More than anything else, this makes us happy and deeply moved. (From a family member)



## Outpatient rehabilitation

I am now able to go to the toilet alone. It was a big help.

At first, making only two rounds at parallel bars make me out of breath and tired, but now, I am able to make five rounds. I also used to utilize portable toilet, as I have difficulty walking up to the toilet. However, now, I am able to go to the toilet alone. Also, now, I am able to go out of bed and go up to the living room. (From the patient)



## Small-scale multi-functional home

Thanks to small-scale multi-functional home, we are able to continue with our daily living at home.

When my father's condition became serious, we almost gave up and had no choice but to send him to a facility; however, after being taken care of at a small-scale multifunction home, our anxiety during night time has vanished. Stay-in, commute or home visit, depending on the service, we can continue our daily living at home, and so we are happy. (From a family member)



# Nursing care



## Outpatient rehabilitation center

Our outpatient rehabilitation center which was opened in 1998 has gained trust from a lot of community hospitals due to our good accomplishments and outcomes for many years. From post-surgery rehabilitation up to the resumption of normal daily living, our doctors and physical therapists provide programs which are specific to each patient.  
Capacity: 70 people



## Day service center

Life Up Oda Ginza is a café-like day service that is situated at the center of a commercial district. It is the home of a unique functional training program that resembles the everyday activities of an accustomed locality. Plenty of recreational activities that are linked to the community are popular.



## Dementia Day Service

We provide compassionate care that is distinctive to a small number of people, and in coordination with Nozue clinic, our independent and patient-specific program is designed to prevent the advancement of dementia and to promote the performance of daily living. No-need-to-overdo rehabilitation and enjoyable recreation improve the mind and body which enables the performance of daily living.



## Medical Day Care

Our Nozue day service center, a type of facility which rarely exists even in Kawasaki City, provides services to patients that require continuous observation from nurses. Keiwakai Medical Group can accommodate patients who encounter difficulty in terms of being admitted to other facilities, as well as those with disuse syndrome.



## Short-term outpatient service (Health club Parale Kawasaki)

Our health club is a type of day service that is recommended for patients who feel uncomfortable staying for a long time in an existing day service or day care, as well as for patients who would like to take short-term (three hours) outpatient rehabilitation. Similar to a fitness club, the open-air ambience allows the body to move freely and refreshes body and mind.



## Kawasaki City General service (Keiwakai Health club)

It is a type of facility which provides short-term outpatient services within the jurisdiction of Kawasaki City based on the City's general services program (standard relaxation). Physical exercises which are condensed to 90 minutes are patient-specific program done under the supervision of a physical therapist. Even for persons who do not obtain certification of long-term care insurance assistance-required benefits, depending on the condition, individuals who are service programs eligible can avail our services.



## Small-scale multi-functional home

This offers services such as staying in at the facility, caregiver's visiting at patient's home, and others depending on necessity, with commuting at the facility as its core. Because practitioners who are certified on caring for patients with dementia are being deployed, there is a sense of security in terms of acceptance. Even for those who necessitate moderate level of nursing care, daily living at home where one has been accustomed to is made possible.



## Group home

It is a type of service which caters to individuals who are diagnosed with dementia, as well as those who are certified as needing assistance and care. Equipped with sanitized private rooms which protect patient's privacy, as well as shared space which allows rapport-building, spacious corridor, comfortable bathrooms, and others, a day that is spent comfortably is guaranteed.



## Rental housing for the elderly with service

In a least residential building with ancillary services, various care services that support the everyday living and health care management of elderly persons are provided in order for them to live safely and comfortably. Provision of meals, laundry, health care management, care rounds and others are done; thus, providing complete support for daily living. It is a new form of reassurance for elderly people.



## Home visiting caregiving systems service (Keiwakai Nozue Care)

It has one-stop provision on four integrated home visiting caregiving systems namely home visiting caregiving, regular and emergency home-based nursing visit, after hours home visiting caregiving, and Kawasaki City General service (home visiting preventive caregiving). It is a business model that operates in a "clients first" concept, responding to various needs of home caregiving.



## Home Support Center

It is a specialized facility designated by the authority where crafting and revision of care plans are performed in order to provide appropriate caregiving services to persons needing care. It is situated at the heart of Kawasaki Ward, Saiwai Ward and Yokohama City Tsurumi Ward.



## Comprehensive community support center

Our corporation has been entrusted by Kawasaki City to operate a public consultation facility in order to support the daily living of elderly persons. Through our social workers, senior care managers and public health nurses, we provide support services in terms of welfare, medical care and general long-term care.



## Home visiting nursing station

Assessment of medical condition, nursing, advice on caregiving method, rehabilitation, treatment of bed sore, end-of-life care, catheterization, and others are being performed. In coordination with attending physician and related medical facility, nursing support is provided based on appropriate judgment.



## Home-based rehabilitation

Physical therapists and occupational therapists conduct direct home visit and provide rehabilitative services to clients requiring rehabilitation, yet encounter difficulty in going to a hospital or a rehabilitation facility. Essential and appropriate programs are created based on physician's medical judgment. This service is said to leverage the strength of the medical corporation group.



### Community-based complex facility Implementation of a care village concept

The symbol of Keiwakai implementing a comprehensive community care is the concept of a care village – a complex caregiving facility where day service, group home and small-scale multi-functional home are housed. Through this integration, starting from medical care-related support, high quality services are efficiently provided. Including transfer between facilities, patients are given top priority in this caregiving facility.



Care village Ogura situated at Saiwai Ward

### Methods fostered at medical and caregiving setting Opening a school for training courses on caregiving qualifications acquisition

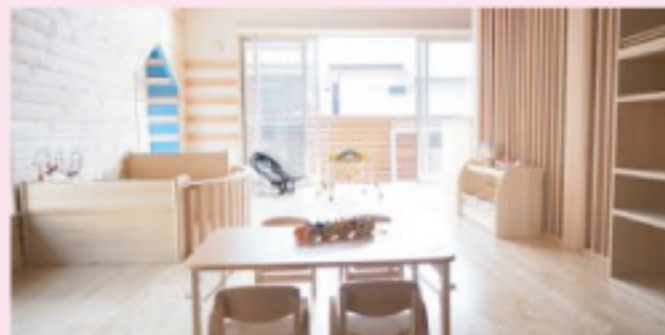
Keiwa Kai Medical College was opened in 2014 with the aim of providing education to the soon-to-be caregivers. At present, “training courses for entry-level” and “practicing care workers” are being offered. A practical curriculum which enables application of accumulated know-how is peculiar to this. While working, qualifications can be acquired without having to be overburdened.



A view of the training program for entry-level non-certified care workers

### In-house nursery school Supporting childrearing mothers

We have established an in-house nursery school at Kawasaki Ward Oda in order to support working mothers with their childrearing. Through the acceptance of grant from the Cabinet Office, it is now possible to provide diverse and flexible child care services. Moreover, since community framework has been established, the shortage of nursery school is expected to be resolved even in Kawasaki City.



Newly-built nursery school opened in 2017

### Kawasaki City outsourcing Operation of a comprehensive community support center

Experience, achievement and valuation are indispensable elements in medical and nursing services provision. Keiwa Kai Group operates a comprehensive community support center in two areas as being entrusted by Kawasaki City. Furthermore, we received designation from Kawasaki City as a training implementing facility in relation to “Kawasaki Living Supporter” program.



Comprehensive community support center located at Oojima Nakajima

Featuring



Keiwakai Group

### Individualized programs developed by doctors and a team of physiotherapists

In order to implement a high level of coordination between medical and nursing care, we believe that the presence of physiotherapy staff is indispensable. Keiwakai Group has more than 10 individuals composed of physical therapists and occupational therapists who, in coordination with doctors, provide services based on patient-specific, individualized program.



Physiotherapy staff composed of more than 10 individuals

### Thorough support for career advancement Supporting striving individuals

Keiwakai Group supports its staffs who aim for career advancement. A lecturer is invited, and an in-house training and group study are actively held every month. A support system is also established even for matters relating to qualifications acquisition. While continuing to work, staffs can refine their skills, and support is extended to those individuals who strive hard.



Monthly in-house training

### Commencing with direct hiring Global human resource plan

Keiwakai Group continues its independent recruitment activities such as the hiring of newly graduated individuals as well as the implementation of flexible employment methods in order to broaden the range of approaches to work. Regarding the hiring of foreigners, we actively conduct direct hiring from the local area. It is also worthy to mention that many acquire qualifications after being hired.



Communication among fellow staff is also flourished

### Thorough connection with the community Creating various areas for interaction

We actively host events together with the local community and company partners on themes regarding “thorough connection with the community.” The tea party that Nozue Orthopedics, Dentistry and Internal Medicine regularly conducts, with the theme on health promotion, earns reputation as an avenue for dialogue between doctors and community residents.



Communication among fellow staff is also flourished



## Overview of Keiwakai Group

(As of April 2019)

**Number of service locations:** 40 service locations

**Service areas:** Kawasaki Ward, Kawasaki City  
Saiwai Ward, Kawasaki City  
Tsurumi Ward, Yokohama City

**Number of employees:** Approximately 500 individuals (including part-timers)

## Keiwakai Medical Corporation

**Address:** 5-1-3 Oda, Kawasaki Ward, Kawasaki City, Kanagawa Province 〒210-0846

**Contact information**

**Telephone number:** 044-355-1561

**Fax number:** 044-355-1574

**Establishment:**

1983 Establishment of medical clinic  
1993 Establishment of Nozue Orthopedics, Dental and Internal Medicine

**Chairwoman of the Board:** Shigeko Kamiyama

**Dentistry Hospital Director :** Toshimi Kamiyama

**Hospital Director:** Yutaka Ozawa

**Services offered:**

Orthopedics, dentistry, internal medicine, consultation on forgetfulness, medical management (internal medicine, orthopedics, dentistry), home health service, home-based rehabilitation, care management center, outpatient rehabilitation services, adult day care service, day care services for people with dementia, day care services for persons requiring a higher level of care, group home for people with dementia, small-scale multi-functional home-based care services, assisted living, comprehensive community support center – assignee, Kawasaki City's primary and secondary prevention program – assignee, comprehensive home-based medical care management center, training and education for care workers

## Keiwakai Medical Co., Ltd.

**Address:** 3-9-11-2F Oda, Kawasaki Ward, Kawasaki City, Kanagawa Province 〒210-0846

**Contact Information:**

**Telephone number:** 044-366-6200

**Representative Director:** Tomoko Inagaki

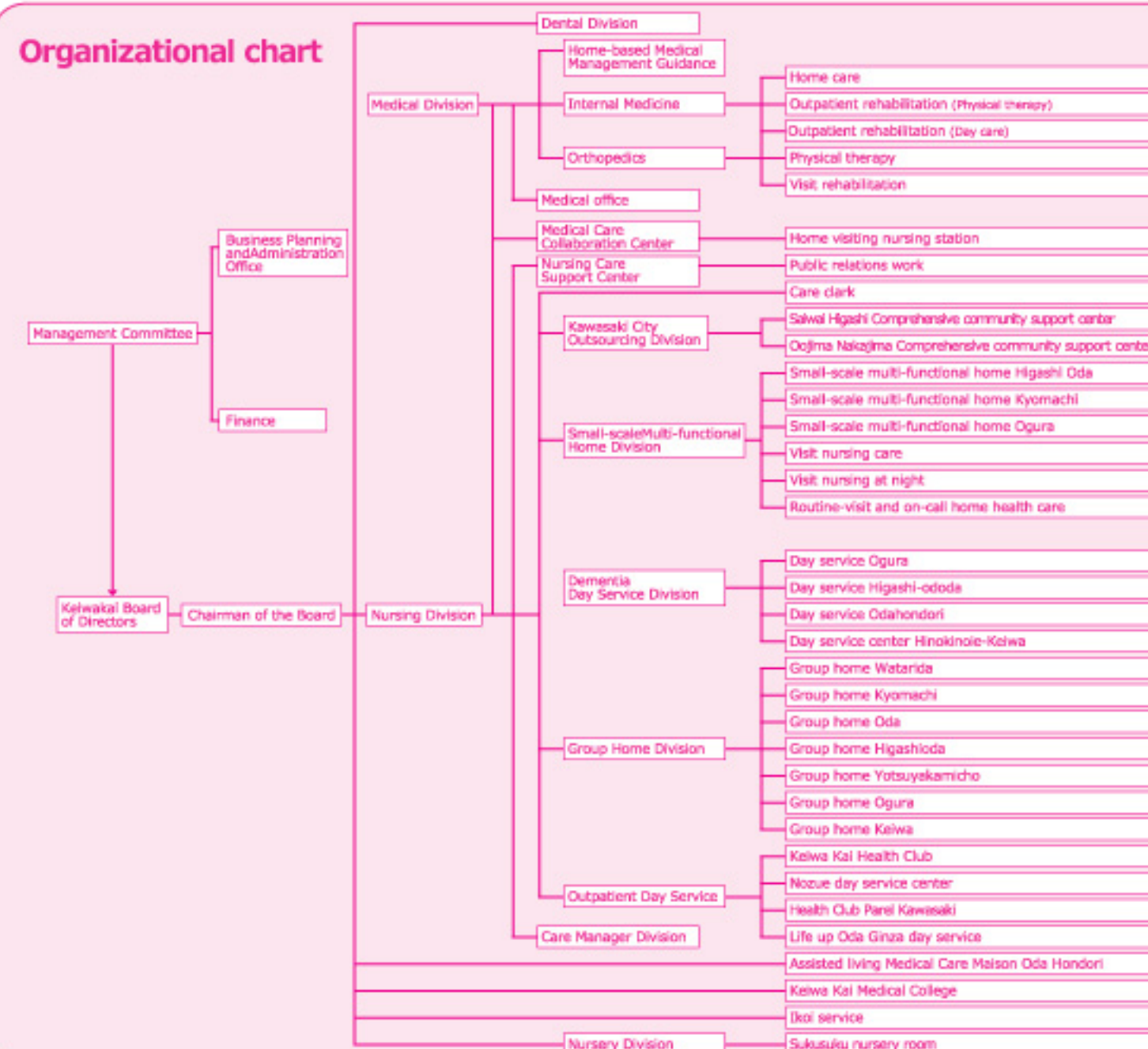
**Services offered:**

Adult day care service, day care services for people with dementia, group home for people with dementia, home care program, training and education for care workers

## History

1983	Establishment of orthopedic clinic
1989	Establishment of dental clinic
1993	Founding of Keiwa Kai Medical Corporation, and Nozue Orthopedics and Dentistry
1998	Establishment of outpatient rehabilitation
July 1999	Establishment of Oda home visiting nursing station
October 1999	Establishment of Oda care management center
April 2000	Establishment of helper station
October 2002	Establishment of Nozue day service center (general type)
February 2006	Establishment of group home Watarida and Keiwa
September 2006	Establishment of Oda day service center
April 2007	Establishment of internal medicine department, and Keiwa Kai medical care center
November 2008	Establishment of Oda Hondori day service, and Oda Hondori medical care maison
March 2010	Establishment of Oojima Nakajima comprehensive community support center
July 2010	Establishment of Nozue Orthopedics, Dentistry and Internal Medicine care center, and Keiwa Kai Health Club
August 2010	Establishment of group home Kyomachi
February 2011	Establishment of Saiwai Higashi comprehensive community support center, and group home Oda
January 2012	Establishment of small-scale multi-functional home Kyomachi, and Keiwa Kai health club Kawasaki Isago
April 2012	Establishment of new clinic building, and relocation of Oda care management center
August 2012	Increased the outpatient rehabilitation capacity up to 70 individuals
January 2013	Establishment of day care service for persons requiring a higher level of care, adjoined to Nozue day service
February 2013	Establishment of Keiwa Kai medical college
April 2013	Establishment of small-scale multi-functional home Higashi Oda and group home Higashi Oda in care village Higashi Oda
May 2013	Establishment of Higashi Oda day service in care village Higashi Oda
September 2013	Adjoining of Oda home visiting nursing station to day care service for persons requiring a higher level of care, Nozue day service
October 2013	Establishment of Nozue Orthopedics, Dentistry and Internal Medicine routine-visit and on-call home health care
January 2014	Establishment of small-scale day service Hinokinoie-Keiwa, and small-scale multi-functional home Asada
June 2014	Establishment of group home Yotsuya Kamicho
January 2015	Establishment of day service Ogura and day service Saiwai in care village Ogura
March 2015	Establishment of group home Ogura and small-scale multi-functional home Ogura in care village Ogura
October 2015	Establishment of day service Oda Ginza
January 2016	Establishment of day service My Road Oda
May 2016	Establishment of in-house nursery school Sukusuku nursery room
April 2017	Establishment of Life up Oda Ginza, and relocation of Sukusuku nursery room

## Organizational chart



**Toll free telephone number**

**0120-900-350**

Reception time : Monday to Friday (AM 9:00 ~ PM 5:00)